

[previous](#) [Home](#) [next](#)

3.12.08 Project Chart

The **project chart** implements the project-related charts. This includes the project overview chart, the [work breakdown structure](#) (project structure plan), target/actual comparison chart for projects and jobs, the [milestone-trend-analysis](#) chart, the visualization of [degree of completion](#), time sheets and a skill matrix.

The following charts can be generated here:

- [Project Overview Chart](#)
- [Project Structure Plan \(Work Breakdown Structure\)](#)
- [Project Chart Target/Actual](#)
- [Jobs Target/Actual](#)
- [Milestone-Trend-Analysis](#)
- [Degree of Completion Chart](#)
- [Skill-Matrix](#)

Project Overview Chart

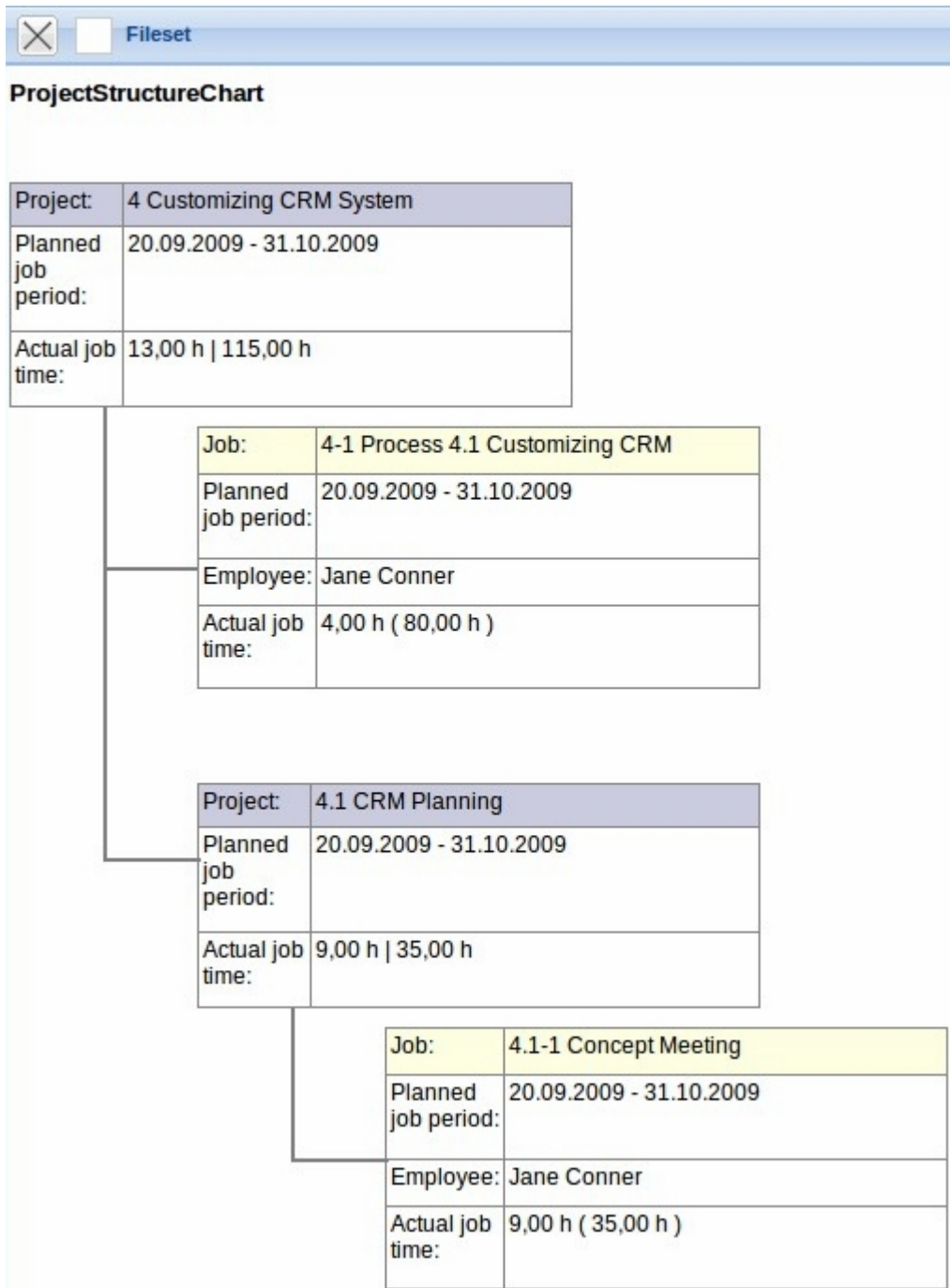
This chart generates an overview of the most relevant key figures of the project. Here, the plan and actual time/effort and incurred costs/revenues are displayed as planned and actual values for the projects and sub-projects. Additionally in this chart, offer values and invoice values as well as degree of completion of projects and sub-projects are listed.

The planned costs specify the internal cost which are based on the planning data of the [jobs](#) and from the [budget administration](#). The internal costs are determined from tracking and recording ([TimeTracker](#)) and [cost recording](#). The project budget is, if necessary, defined in the project and the planned revenue is calculated from the external evaluation of the jobs and budget administration. The external revenue specifies all billable services in the system (time and costs).

ProjectOverview							
Projektübersicht							
Project	Description	Actual[h]	Difference [h]	Begin planning	End planning	Travel Costs [EUR]	Total Estimated External [EUR]
3 Introduction Projectile	Introduction Projectile	175,67	11,83	09.06.2009	31.12.2009	544,00	27.975,00
3.1 Introduction Accounting	Introduction Accounting	21,50	-21,50	09.06.2009	30.11.2009	485,00	2.000,00
3.1.1 Introduction Accounting	Introduction Accounting	0,00	0,00	09.06.2009	22.07.2009	0,00	0,00
3.2 Projectplanning	Projectplanning	0,00	0,00	09.06.2009	30.11.2009	0,00	0,00
3.3 Implementation	Implementation	0,00	1,00	15.08.2009	16.10.2009	0,00	70,00
3.3.1 development of new projects	development of new projects	0,00	0,00	15.08.2009	16.10.2009	0,00	0,00
7 Update Projectile	Update Projectile	0,00	108,00	16.10.2009	30.11.2009	0,00	22.620,00
7.1 Introduction Accounting	Introduction Accounting	0,00	0,00	16.10.2009	30.11.2009	0,00	2.000,00
		197,17	99,33			1.029,00	54.665,00

Project Structure Plan (Work Breakdown Structure)

The Work Breakdown Structure diagram illustrates the project structure. The [work breakdown structure](#) (project structure plan) in Projectile displays the relationship of the [project](#) and the sub-projects with the corresponding [jobs](#). The logical structure of the project (project structure/project hierarchy) down to the jobs level is visualized graphically. This chart also contains important planned and actual data of the projects, sub-projects and jobs.

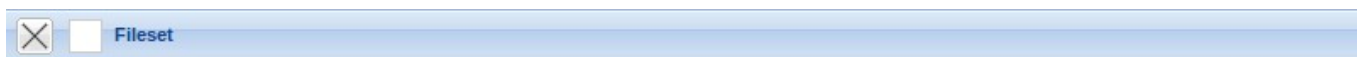


Project Chart Target/Actual

The project chart target/actual provides an overview of the work services of the individual [projects](#) including the corresponding sub-projects. The target times and actual times for the project are displayed as a diagram and as a list. The planning data is determined directly through the assignment of the jobs to the project or sub-project and the actual times are used through tracking and recording in [TimeTracker](#).

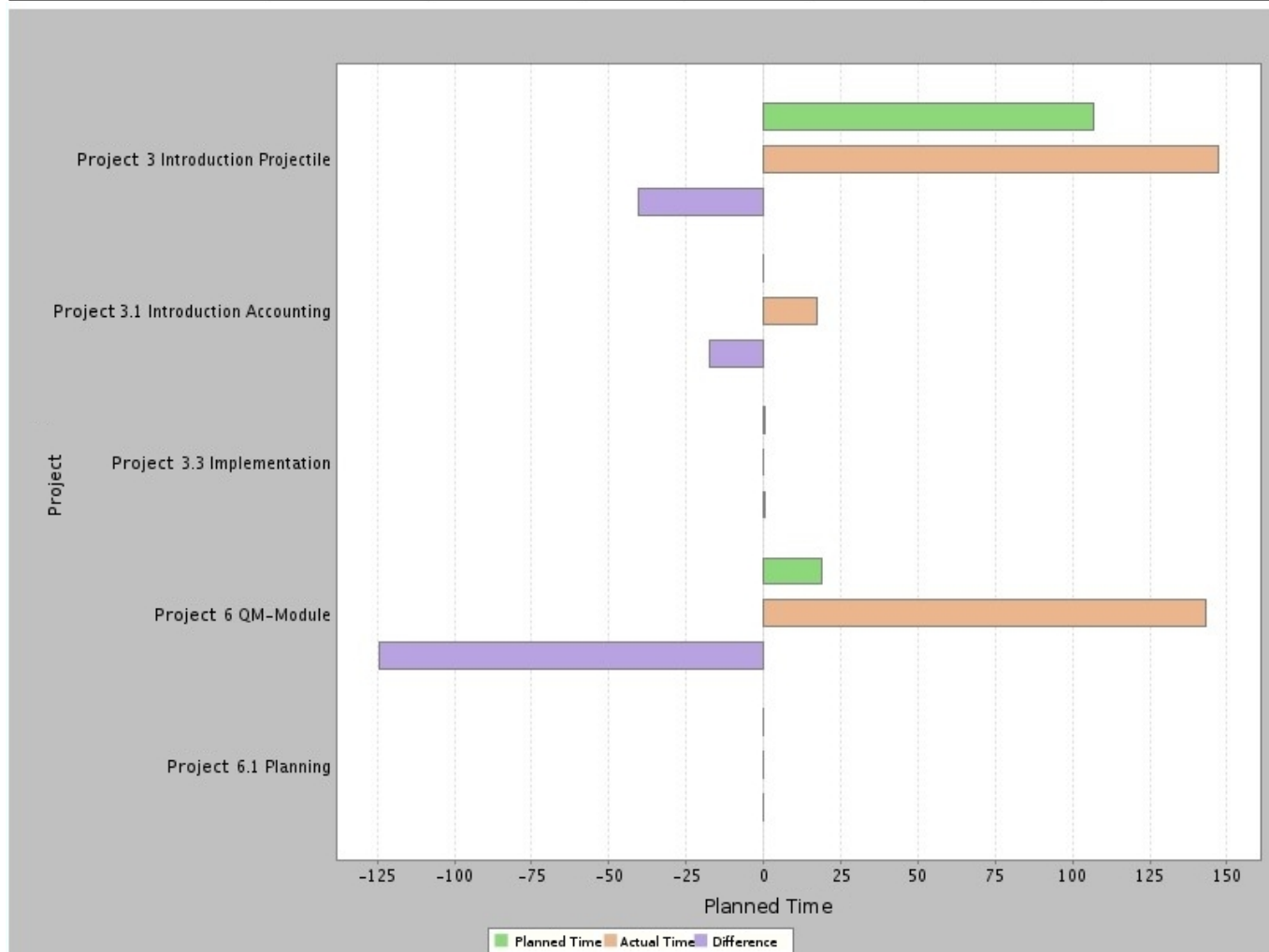
The chart also contains information for planned-start and planned-end, of the project status and the estimated [degree of completion](#).

The chart can display the planned data and actual data graphically, if the option "with image" (format tab) is set.



Projects Target/Actual

Project	Project manager	Planned Time[h]	Actual [h]	Difference [h]	Begin	End	Status	Completion Quan.
3 Introduction Projectile	Conner Jane	106,57	147,17	-40,59	09.06.2009	31.12.2009	Active	
3.1 Introduction Accounting	Hahn Katrina	0,00	17,50	-17,50	09.06.2009	30.11.2009	Active	
3.3 Implementation	Conner Jane	0,27	0,00	0,27	15.08.2009	16.10.2009	Active	
6 QM-Module	Conner Jane	18,67	143,00	-124,33	15.08.2009	31.12.2009	Active	
6.1 Planning	Conner Jane	0,00	0,00	0,00	15.08.2009	16.10.2009	Active	
		125,51	307,67	-182,15				



Jobs Target/Actual

The chart **jobs target/actual** provides an overview of the work services of the individual **jobs** of the selected projects. The planned times and actual times for the work packages are displayed as a diagram or as a list. The planning data is determined through jobs and the actual times are used through tracking and recording in **TimeTracker**.

The chart also contains information for planned-start and planned-end of the jobs, of the status (including the due date) of the jobs and the estimated **degree of completion** through TimeTracker.

Project	Job	Employee	Planned [h]	Actual [h]	Difference [h]	Rest	Begin	End	Closed	State
3 Introduction Projectile	3-1 Concept for combining Projectile and SAP CO/FI	Jones Timothy	8,13	20,50	-12,37	0,00	09.06.2009	30.11.2009	23.11.2009	FINISHED
3 Introduction Projectile	3-2 Installation Projectile	Jones Timothy	1,52	5,13	-3,61	0,00	09.06.2009	30.12.2009	23.11.2009	FINISHED
3 Introduction Projectile	3-3 Programming 4-3	Tate Adam	16,92	18,28	-1,36	0,00	09.06.2009	30.10.2009	23.11.2009	FINISHED_LATE
3 Introduction Projectile	3-4 Project Management	Conner Jane	30,00	28,00	2,00	0,00	19.10.2009	30.12.2009	23.11.2009	FINISHED
3 Introduction Projectile	3-5 3.1-1 Concept - 3 Planning	Conner Jane	30,00	19,75	10,25	0,00	19.10.2009	21.12.2009	20.10.2009	FINISHED
3 Introduction Projectile	3-6 Customizing	Conner Jane	20,00	24,50	-4,50	0,00	02.10.2009	30.12.2009	23.11.2009	FINISHED
3 Introduction Projectile	3-7 Programming	Tate Adam	0,00	31,00	-31,00	0,00	01.10.2009	11.12.2009	23.11.2009	FINISHED
3.1 Introduction Accounting	3.1-1 Introduction Projectile	Conner Jane	0,00	17,50	-17,50	0,00	09.06.2009	01.10.2009	23.11.2009	FINISHED_LATE
3.3 Implementation	3.3-1 Templates	Jane Conner	0,27	0,00	0,27	0,00	15.08.2009	16.10.2009	13.11.2009	FINISHED_LATE
3.3 Implementation	3.3-2 Reports	Jane Conner	0,00	0,00	0,00	0,00	15.08.2009	16.10.2009	13.11.2009	FINISHED_LATE
3.3 Implementation	3.3-3 Documentation	Jane Conner	0,00	0,00	0,00	0,00	15.08.2009	16.10.2009	13.11.2009	FINISHED_LATE
			106,84	164,67	-57,83	0,00				

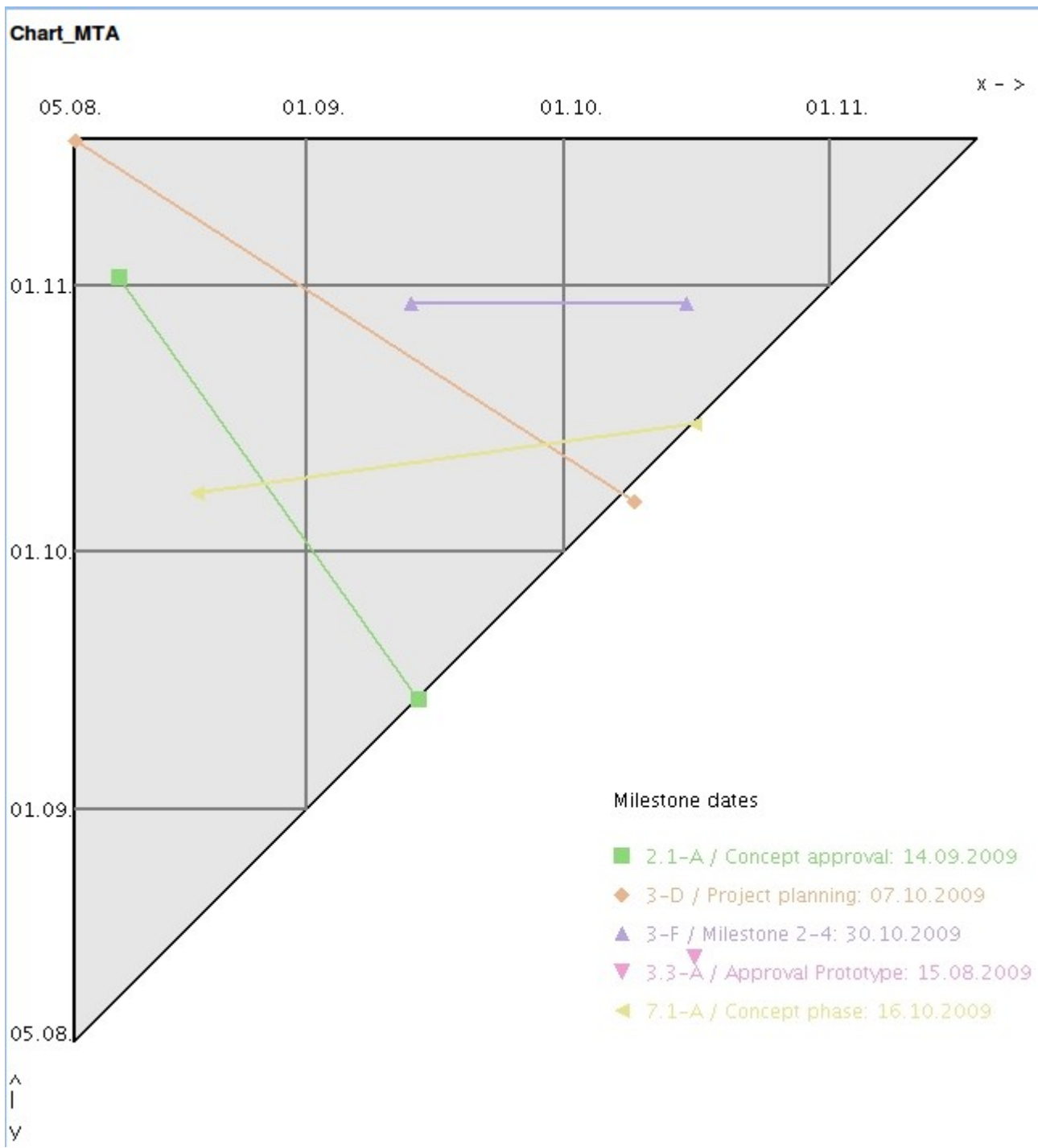
The chart can display the planned data and actual data graphically, if the option “with image” (format tab) is set.

Milestone-Trend-Analysis

The Milestone-Trend-Analysis (MTA) chart displays trends for completing the defined **milestones**. The milestone-trend-analysis is a future-related instrument used for controlling deadlines of a **project**: On regular reporting dates, the project **scheduling** is estimated through a query of trend data for the probable time of achieving the objective. Through the course of the curve, a trend can be concluded through the deadlines of the project. The due dates for the milestones can be administered in the document type **deadline**.

The course of the curve for this chart is interpreted as follows:

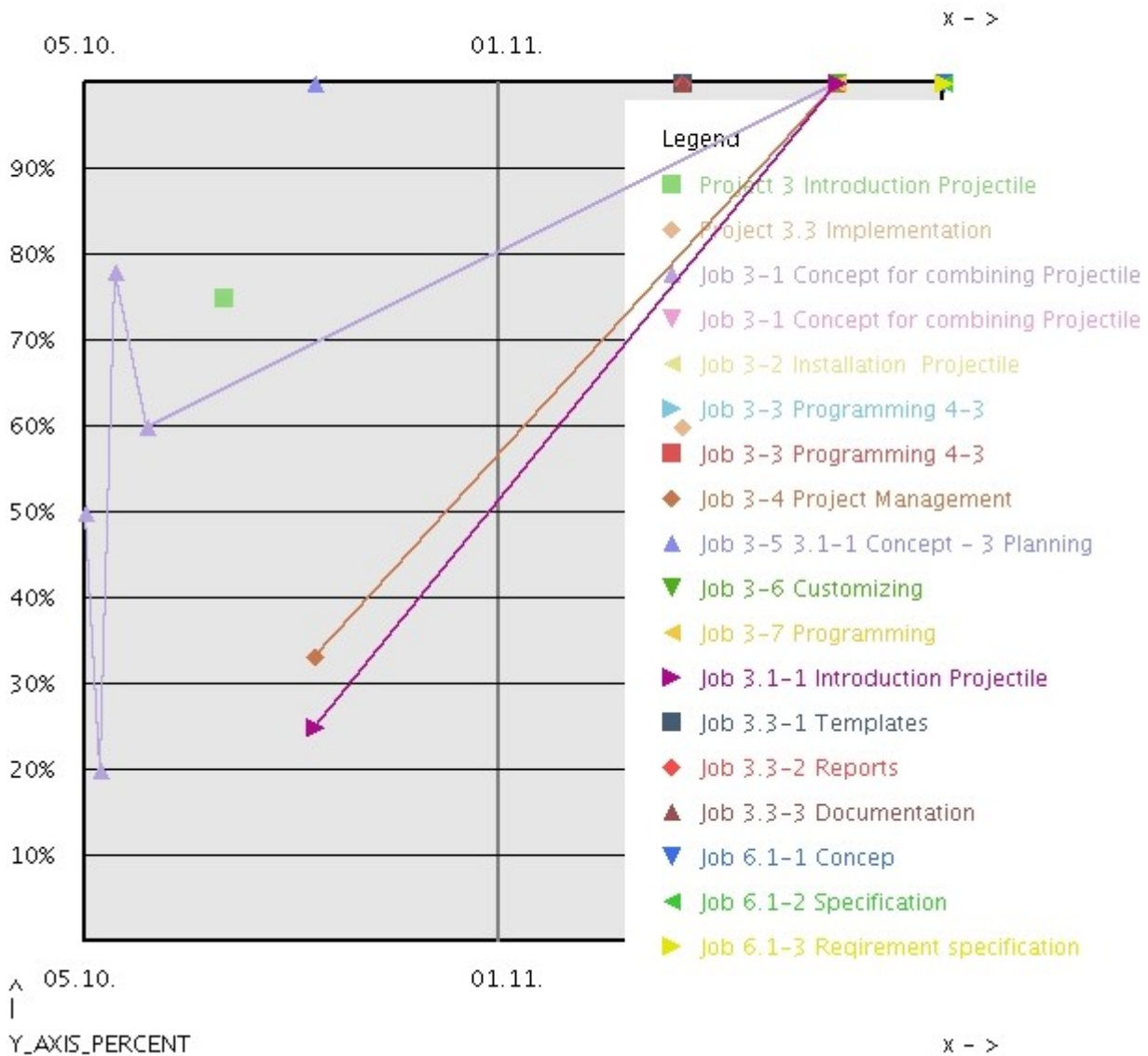
- an ascending curve means: a delayment ⇒ The milestone objective will be/is achieved late,
- a horizontal curve means: deadline is met ⇒ The milestone objective will be/is achieved on time and
- a descending curve means: the milestone objective will be/is achieved too early.



Degree of Completion

The **degree of completion** chart displays a graphical overview of the previous estimates for the projects and jobs. These estimates can be performed in the projects and/or the sub-projects or in [TimeTracker](#) for the individual jobs. Further information can be found in chapter [4.2.7 Estimates](#).

Completion Chart



Skill-Matrix

The **skill-matrix** chart provides an overview of the project services for the selected projects and sub-projects regarding the individual occupations.

ProjectSkillMatrix

TopProject	Project	Customizing	Installation & Einführung	Programming - Java	Programming - MS SQL	Programming-Java	Schulung/Workshops	Support	Total
3 Introduction Projectile		73,00	5,13	18,28	31,00	0,00	0,00	19,75	147,17
3 Introduction Projectile	3.1 Introduction Accounting	0,00	0,00	0,00	0,00	17,50	0,00	0,00	17,50
3 Introduction Projectile		73,00	5,13	18,28	31,00	17,50	0,00	19,75	164,67
6 QM-Module		132,00	0,00	0,00	0,00	0,00	11,00	0,00	143,00
6 QM-Module		132,00	0,00	0,00	0,00	0,00	11,00	0,00	143,00

From:
<https://infodesire.net/dokuwiki/> - **Projectile-Online-Handbuch**

Permanent link:
https://infodesire.net/dokuwiki/doku.php?id=en:handbuch:kapitel_3:3.12.08_projektauswertung

Last update: **2019/10/25 14:11**

