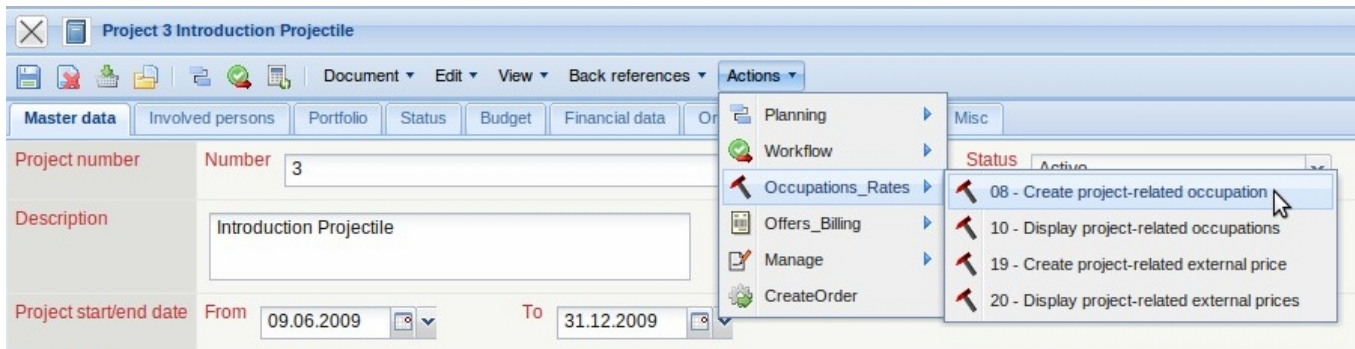


[previous](#) [Home](#) [next](#)

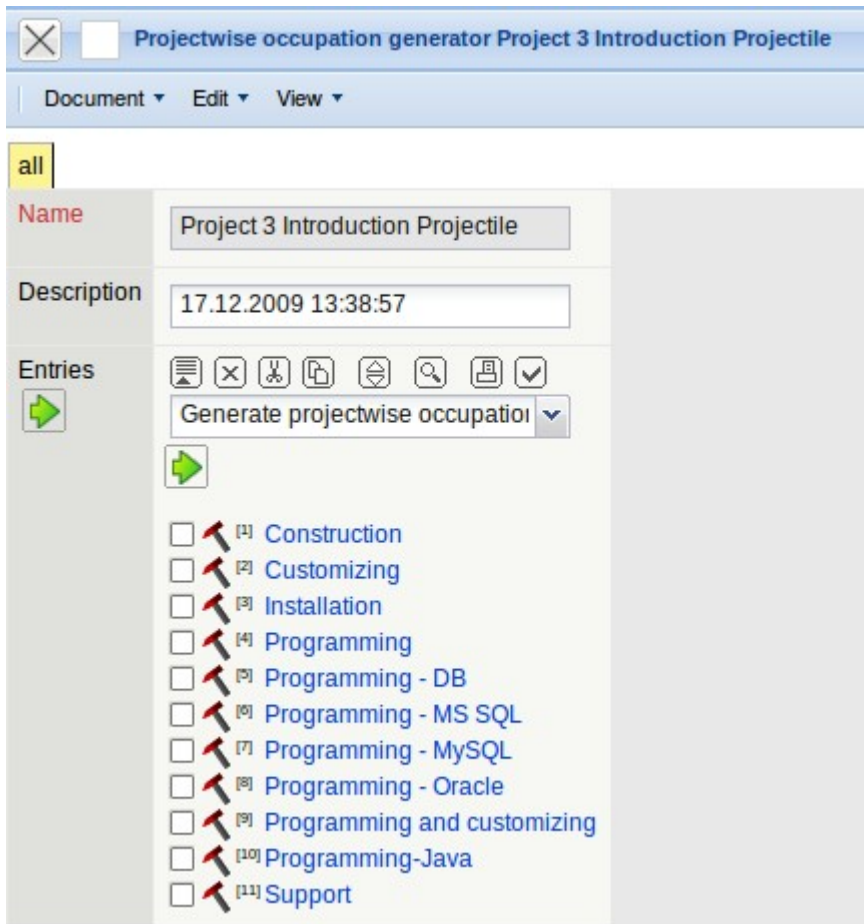
3.11.05 Occupation Administration (Project-related Occupations) (Continued 2)

Using project-related occupations, the project-related cost rates on the basis of the occupations can be defined. The cost rates of the project-related occupations are directly defined through 'project'.

Using the action „create project-related occupation“, the functionality is called and ...

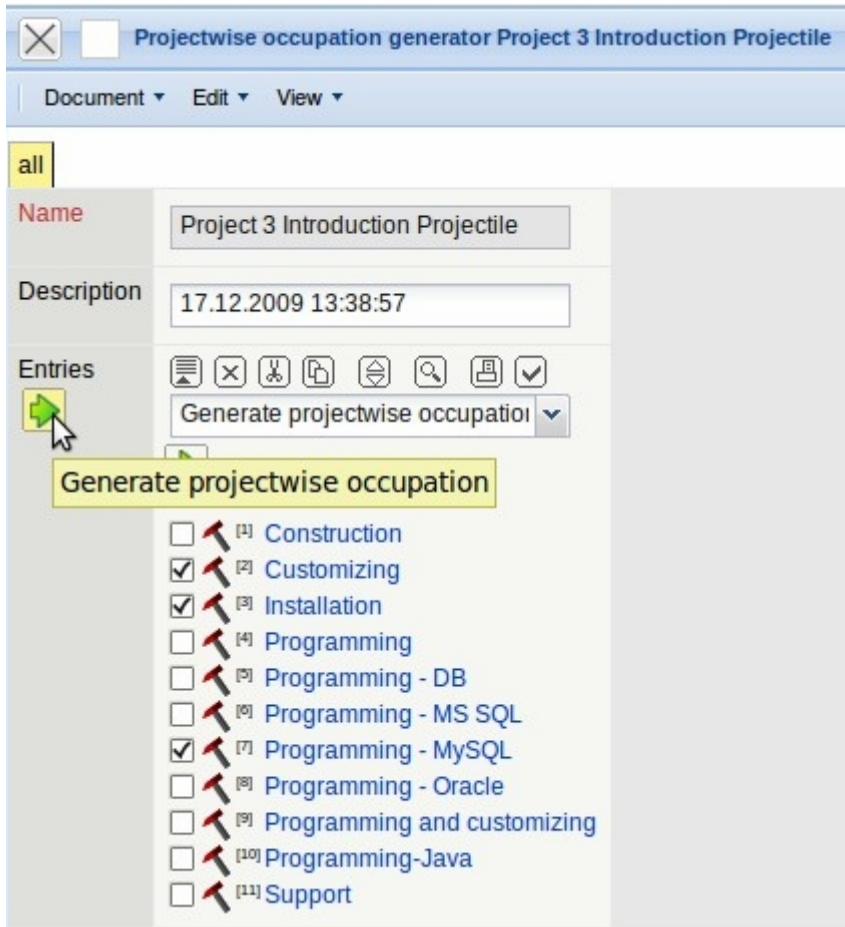


... a new overview of all occupations is opened.



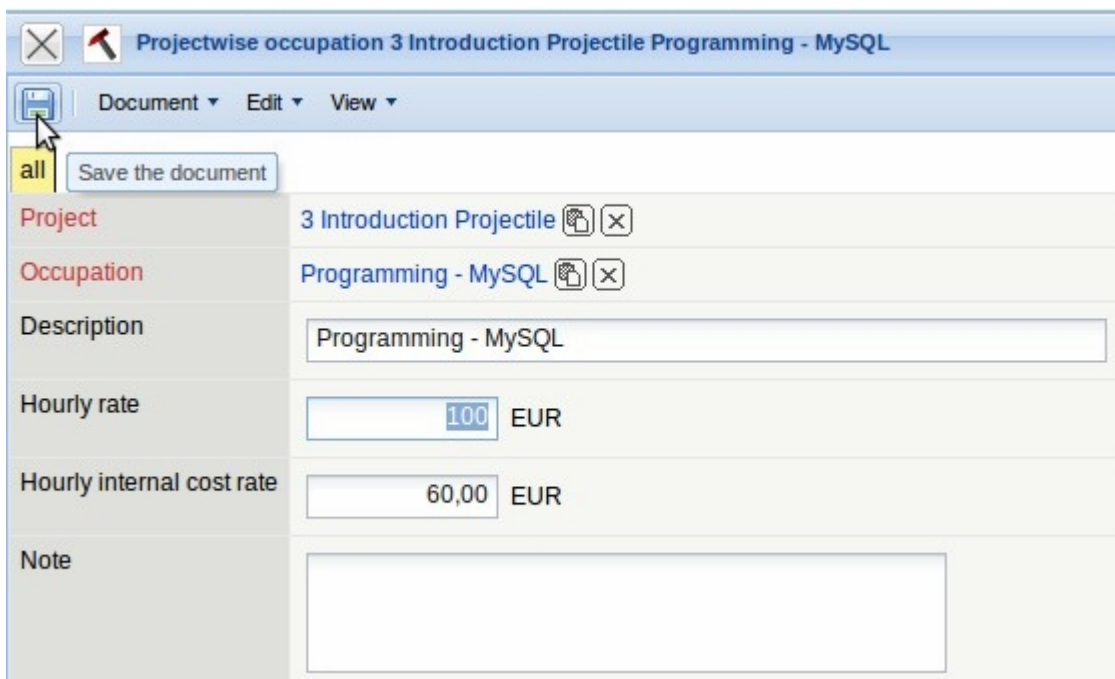
All entries which should be explicitly customized for this project can be selected here (here customizing, installation and programming MySQL). By clicking on the green arrow, the marked

occupations are displayed ...



... with the standard cost rates which are stored by default. These can be now be modified for this project and then saved.

This example refers to the occupation 'Programming - MySQL' in the project Introduction Projectile. The rate of EUR 100,00 per hour is offered and charged for this project (if the occupation 'Programming - MySQL' is assigned to the job).



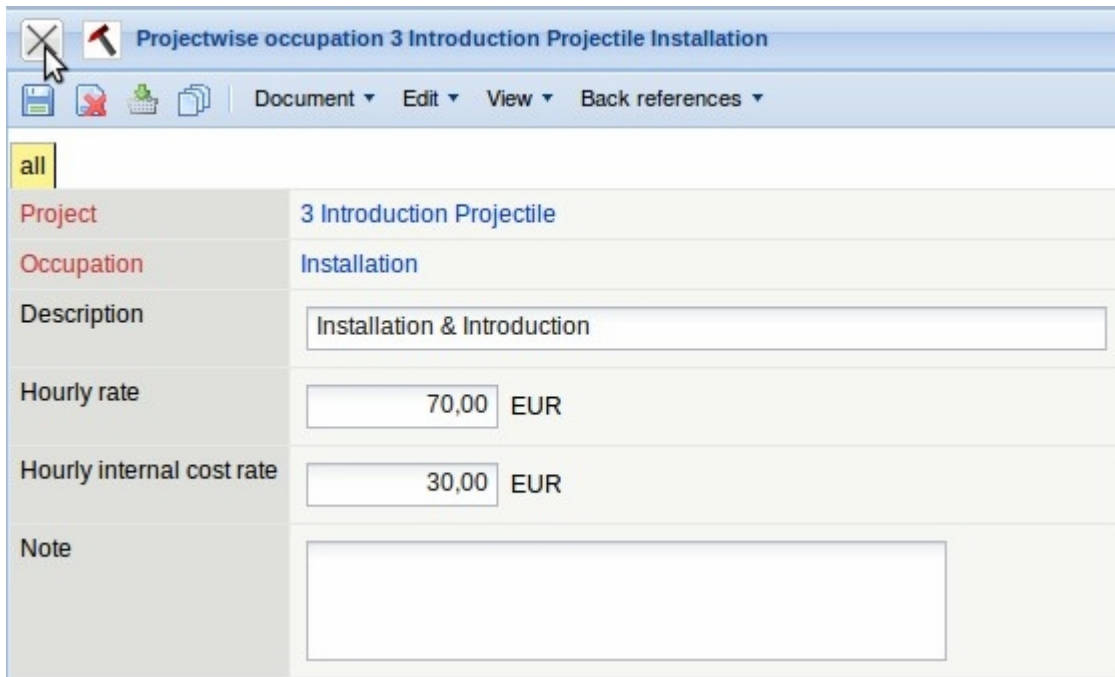
After closing the document ...

Project	3 Introduction Projectile
Occupation	Programming - MySQL
Description	<input type="text" value="Programming - MySQL"/>
Hourly rate	<input type="text" value="100,00"/> EUR
Hourly internal cost rate	<input type="text" value="60,00"/> EUR
Note	<input type="text"/>

... the next occupation is modified project-related (here occupation 'Customizing' ...)

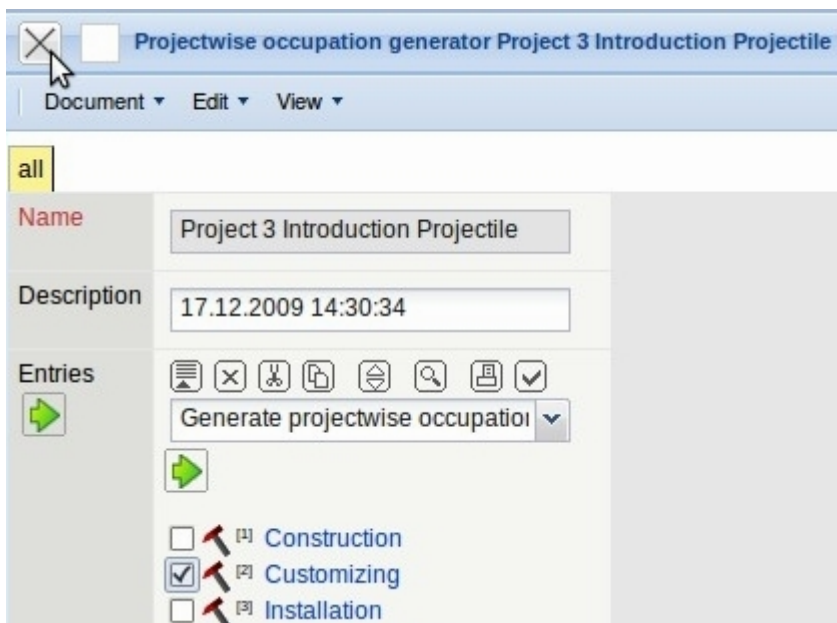
Project	3 Introduction Projectile
Occupation	Customizing
Description	<input type="text" value="Customizing"/>
Hourly rate	<input type="text" value="75"/> EUR
Hourly internal cost rate	<input type="text" value="35,00"/> EUR
Note	<input type="text"/>

... and then the occupation 'Installation').



Project	3 Introduction Projectile
Occupation	Installation
Description	Installation & Introduction
Hourly rate	70,00 EUR
Hourly internal cost rate	30,00 EUR
Note	

After saving the document and the dialog 'project-related occupations', the project-related occupations are then active. These values can now be used for charts, offer preparation and invoicing, etc.



Name	Project 3 Introduction Projectile
Description	17.12.2009 14:30:34
Entries	<ul style="list-style-type: none"><input type="checkbox"/> Construction<input checked="" type="checkbox"/> Customizing<input type="checkbox"/> Installation

If the existing calculation of the project should also be modified, the action 'recalculate' must be performed.

The screenshot shows a software interface for 'Project 3 Introduction Projectile'. It features a menu bar with 'Document', 'Edit', 'View', 'Back references', and 'Actions'. Below the menu is a tabbed interface with 'Master data', 'Involved persons', 'Recalculate status', 'Budget', 'Financial data', 'Order data', 'Documentation', and 'Misc'. The 'Budget' tab is active, displaying a summary table and a detailed budget table.

Total primary costs & revenues		Revenue	Cost	Profit	Profit
		20.597,50 EUR	10.437,50 EUR	10.160,00 EUR	49,33 %
Internal primary costs & revenues		16.597,50 EUR	7.437,50 EUR	9.160,00 EUR	55,19 %
External primary costs & revenues		4.000,00 EUR	3.000,00 EUR	1.000,00 EUR	25 %

Description	Cost	Budget (internal)	Budget (external)	Budget difference	Number of deductions	Item
1 MS SQL-Server 2000	Project costs	4.000,00	5.900,00	1.900,00	1	SQL-Server SQL-Server SQL-S
2 Projectile Standard Version	Real costs	2.200,00	4.800,00	2.600,00	3	Projectile +5 Projectile +5
Σ		6.200,00	10.700,00	4.500,00		

Total effort		Revenue	Cost	Profit	Profit
		33.297,50 EUR	18.637,50 EUR	14.660,00 EUR	44,03 %

Below the summary tables, there are input fields for 'Fixed-price surcharge' (Percent: 0%, Total: 0,00 EUR), 'Risk surcharge' (5%, 1.664,88 EUR), and 'Negotiation surcharge'.

This action updates the revenue and profit based on the modified data.

This screenshot shows the same software interface as above, but with updated data. The 'Budget' tab is still active, and the summary tables reflect the changes.

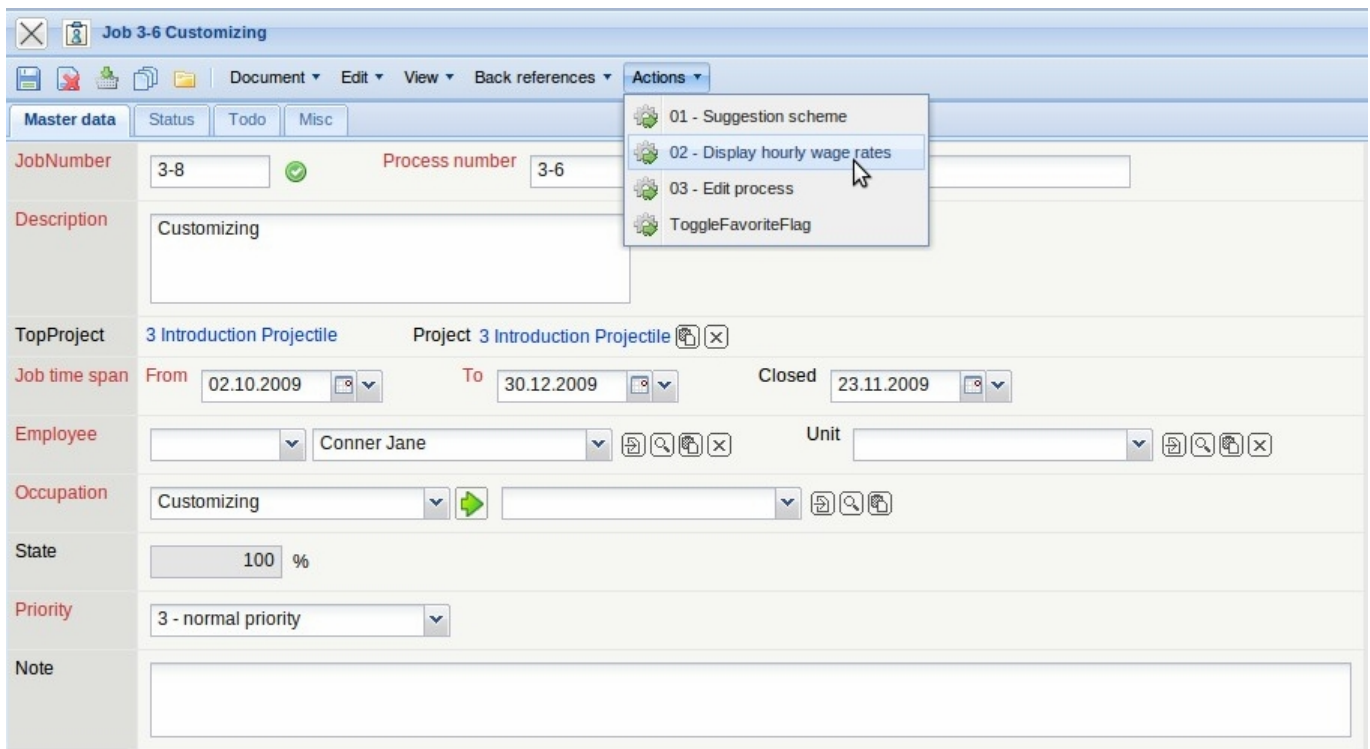
Total primary costs & revenues		Revenue	Cost	Profit	Profit
		17.345,00 EUR	10.437,50 EUR	6.907,50 EUR	39,82 %
Internal primary costs & revenues		13.345,00 EUR	7.437,50 EUR	5.907,50 EUR	44,27 %
External primary costs & revenues		4.000,00 EUR	3.000,00 EUR	1.000,00 EUR	25 %

Description	Cost	Budget (internal)	Budget (external)	Budget difference	Number of deductions	Item
1 MS SQL-Server 2000	Project costs	4.000,00	5.900,00	1.900,00	1	SQL-Server SQL-Server SQL-S
2 Projectile Standard Version	Real costs	2.200,00	4.800,00	2.600,00	3	Projectile +5 Projectile +5
Σ		6.200,00	10.700,00	4.500,00		

Total effort		Revenue	Cost	Profit	Profit
		30.045,00 EUR	18.637,50 EUR	11.407,50 EUR	37,97 %

The 'Fixed-price surcharge' (0%, 0,00 EUR), 'Risk surcharge' (5%, 1.502,25 EUR), and 'Negotiation surcharge' (5%, 1.502,25 EUR) fields are also visible.

In the job which belongs to the project, which has a project-related occupation assigned to it, these rates are used. It is possible, using the action 'Display hourly wage rates' in job, ...

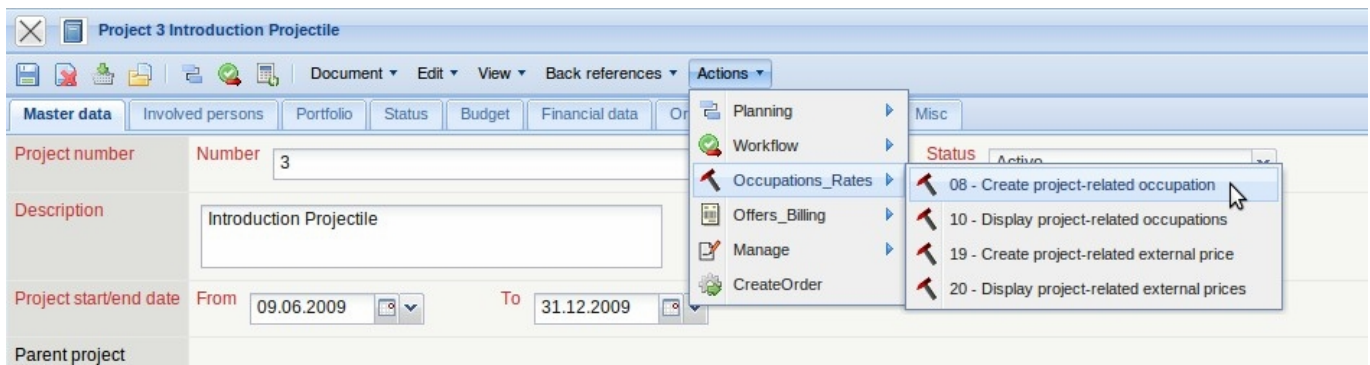


... to display the internal and external rates.

Date	Netto Cost	Netto Source	Brutto Cost	Brutto Source
02.10.2009 - 30.12.2009	35,00	Projectwise occupation 3 Introduction Projectile Customizing	35,00	Projectwise occupation 3 Introduction Projectile Customizing

Hourly rate (external) = 75,00 as stated in Projectwise occupation 3 Introduction Projectile Customizing

Using the action 'Display project-related occupations' ...



... the occupations for a project or sub-project can be displayed and modified.

	Project	Occupation
1	Project 3 Introduction Projectile	Occupation Customizing
2	Project 3 Introduction Projectile	Occupation Installation
3	Project 3 Introduction Projectile	Occupation Programming - MySQL

Note: These rates are **not** valid if a global external rate exists. The global external rates can be stored in [project](#), [customer](#) oder [employee](#) and override all occupation rates.

From:
<https://infodesire.net/dokuwiki/> - **Projectile-Online-Handbuch**

Permanent link:
https://infodesire.net/dokuwiki/doku.php?id=en:handbuch:kapitel_3:3.11.05_verwaltung_von_taeatigkeiten_projektweise_taeatigkeiten

Last update: **2019/10/25 14:11**

