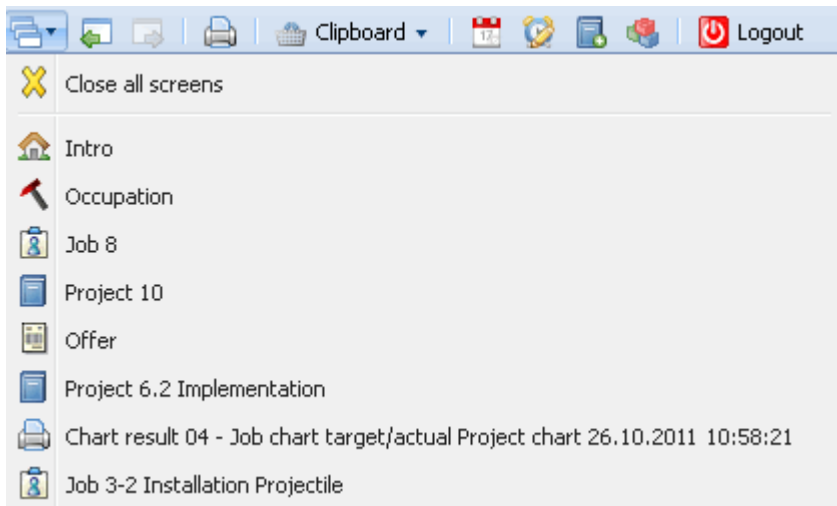



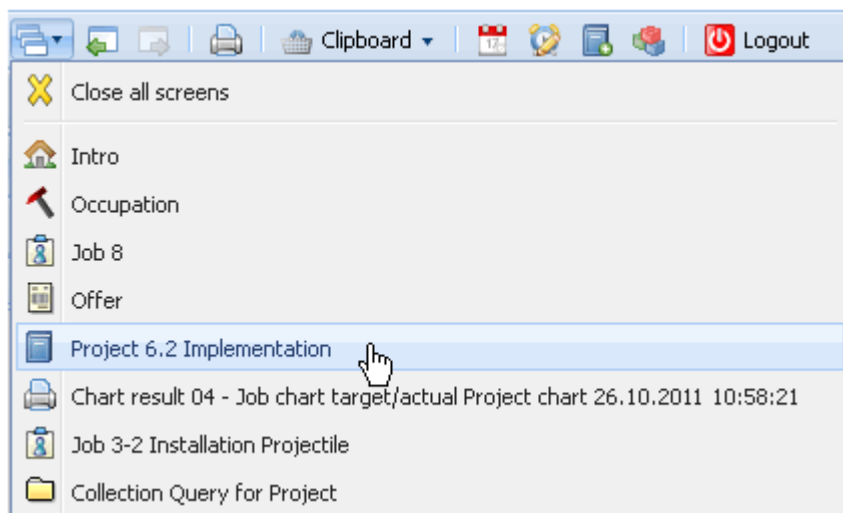
[previous](#) [Home](#) [next](#)

# 3.02.02 Window Manager

A list of all open screens are in the lower part of the work area - the window manager. The listed screens can be opened directly or through this list. In the example, work area (Intro), are listed in the window manager.



One item in the list consists of the close button  for all opened screens and the items for opened screens with a link to the form. Changing to a form in the list, an item link is used ...



The screenshot shows the 'Project 6.2 Implementation' window. It features a toolbar with icons for document, edit, view, back references, and actions. Below the toolbar are tabs for 'Master data', 'Involved persons', 'Portfolio', 'Status', 'Budget', 'Financial data', 'Order data', 'Documentation', and 'Misc'. The 'Master data' tab is active, displaying the following information:

- Project number:** Number 6.2, Status Active
- Description:** Implementation
- Project start/end date:** From 15.08.2012 To 16.10.2012
- Parent project:** 6 QM-Module
- Subprojects:** A table with columns for Number, Description, and Status.

Number	Description	Status
1	Introduction Accounting	Active
2	development of new projects	Closed live
3	10 Introduction Projectile	Closed live

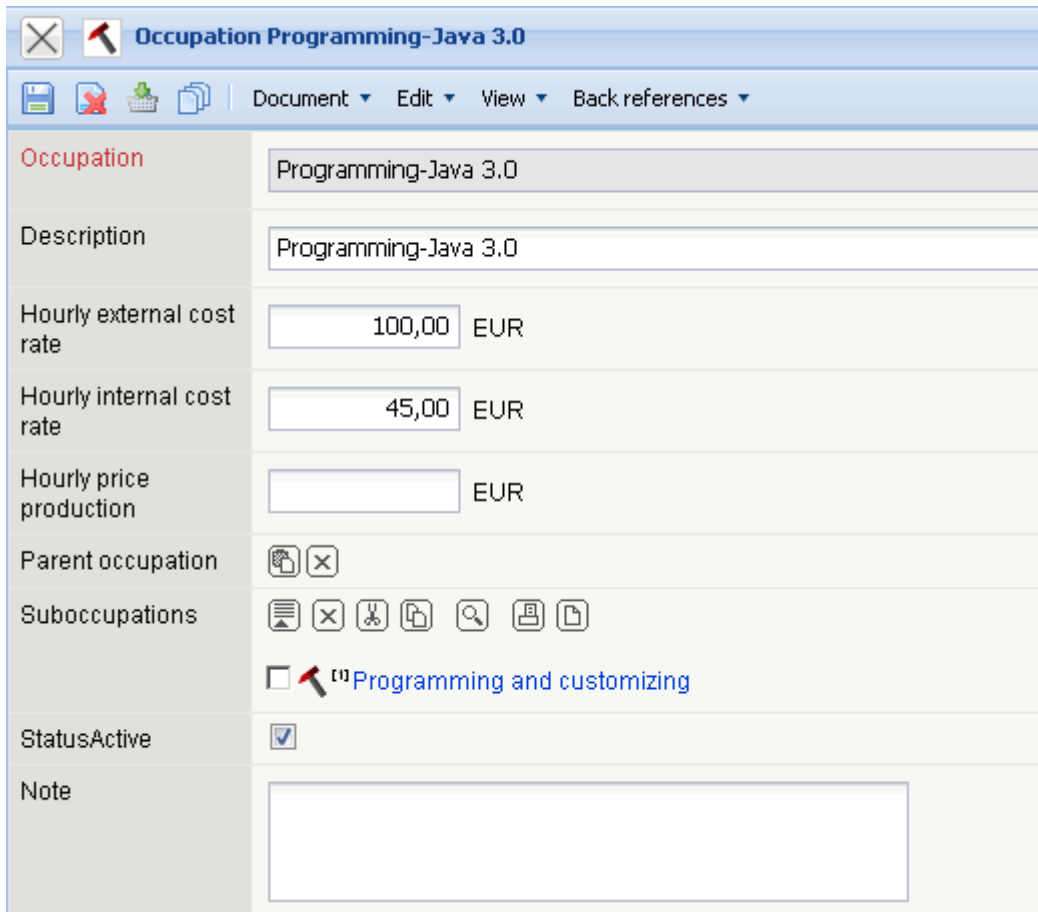
... and the appropriate document (here the project MSP) is opened in the left part of the application.

To close a document in the list, the close button can be used ...

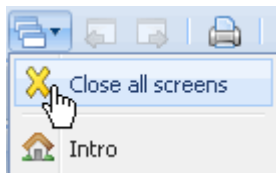
This screenshot is similar to the previous one, but a red arrow points to the close button (an 'X' icon) in the top-left corner of the window's title bar.

... and the appropriate document is then closed.

The screenshot shows the application's main menu. The 'Close all screens' option is highlighted with a mouse cursor. Other menu items include Intro, Occupation, Job 8, Offer, Project 6.2 Implementation, Chart result 04 - Job chart target/actual Project chart 26.10.2011 10:58:21, Job 3-2 Installation Projectile, and Collection Query for Project.




Using “  Close all screens”, all opened screens ...



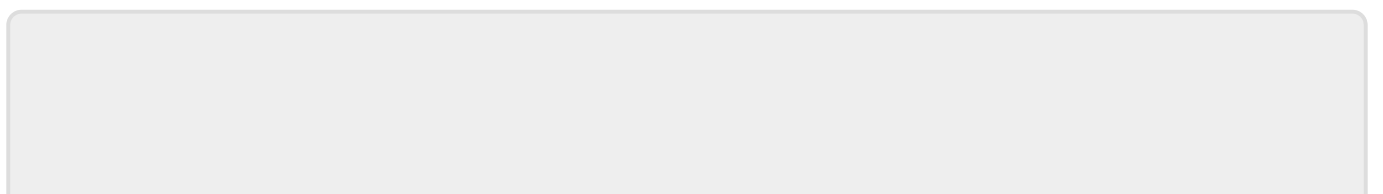
... excluding the work area (Intro) are closed. Alternatively, using the “Home”-Functionality in the top menu bar ...



... or the button , Intro can be opened at any time, without closing all windows.



All functions that are available in the menu bar of the window manager.



Last update: 2019/10/25 14:11 en:handbuch:kapitel\_3:3.02.2\_fenstermanager [https://infodesire.net/dokuwiki/doku.php?id=en:handbuch:kapitel\\_3:3.02.2\\_fenstermanager](https://infodesire.net/dokuwiki/doku.php?id=en:handbuch:kapitel_3:3.02.2_fenstermanager)

---

From: <https://infodesire.net/dokuwiki/> - **Projectile-Online-Handbuch**

Permanent link: [https://infodesire.net/dokuwiki/doku.php?id=en:handbuch:kapitel\\_3:3.02.2\\_fenstermanager](https://infodesire.net/dokuwiki/doku.php?id=en:handbuch:kapitel_3:3.02.2_fenstermanager)



Last update: **2019/10/25 14:11**