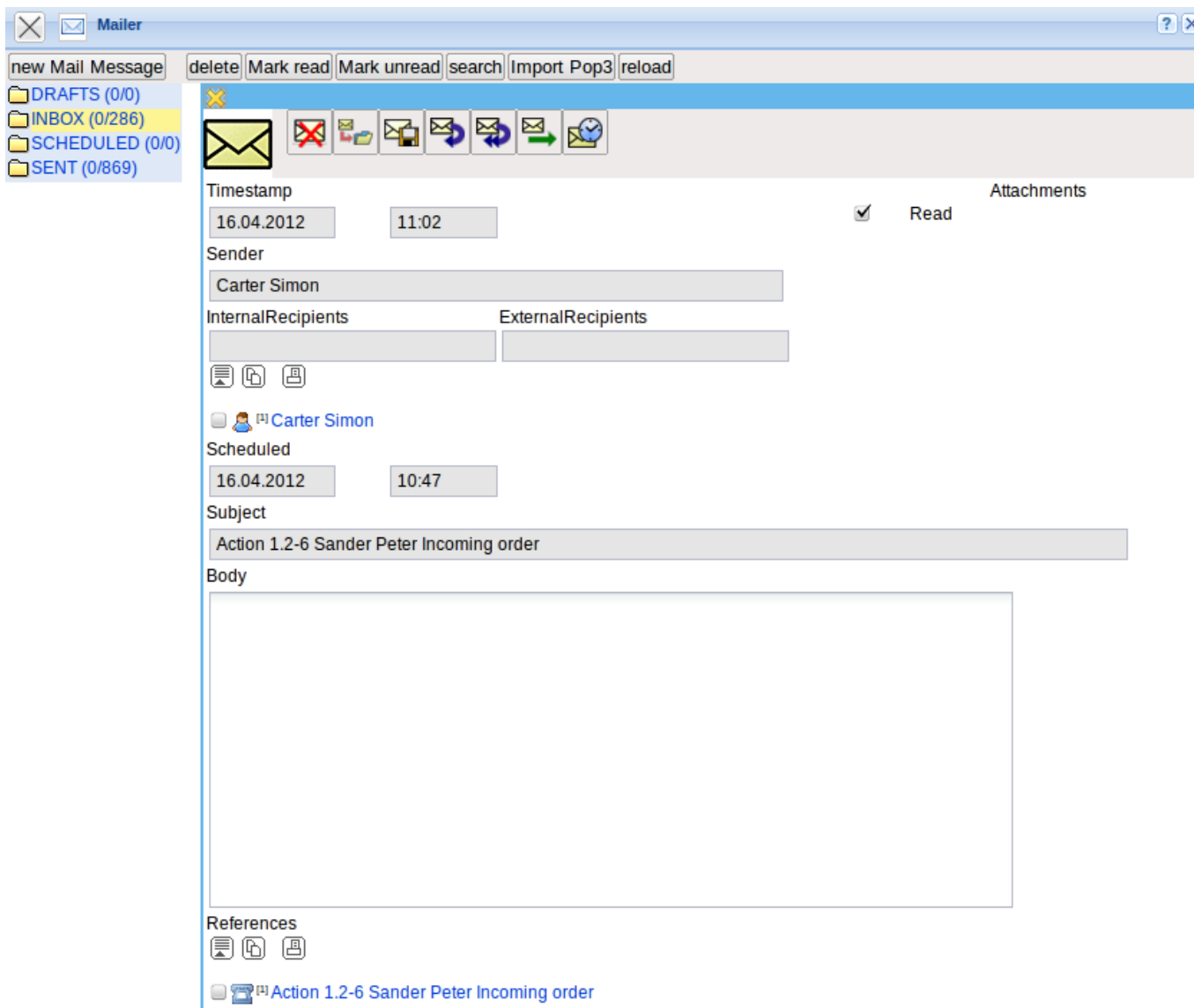


[previous](#) [Home](#) [next](#)

2.09 Internal Messaging System (Passive Mailer)

Projectile contains an internal messaging system. The function to receive the internal messages (passive Mailer) is part of the basic version. Using this function, the sent messages are displayed and can be opened for reading. Furthermore, the mails are also displayed in the personal calendar (Calendar plug in).

Tip: For more on this subject see chapter [2.11.01 Mailsystem Mailer](#) and in [3.04.1 Mailsystem Mailer](#).



From: <https://infodesire.net/dokuwiki/> - **Projectile-Online-Handbuch**

Permanent link: https://infodesire.net/dokuwiki/doku.php?id=en:handbuch:kapitel_2:2.09_internes_benachrichtigungssystem_passiver_mailer



Last update: **2019/10/25 14:11**