

[previous](#) [Home](#) [next](#)

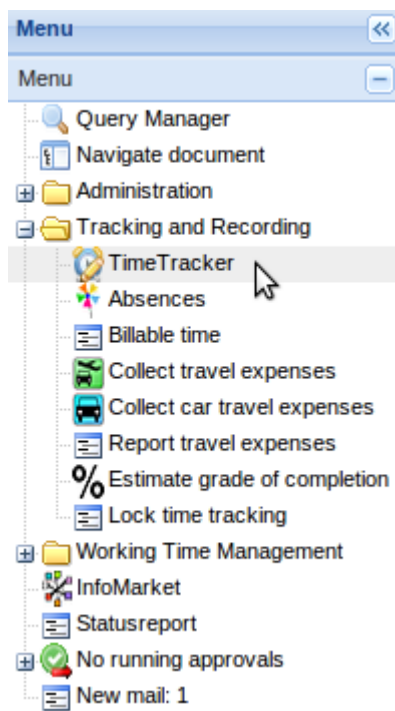
2.06 Rapid Entry and further Functionalities

Projectile consist of various quick entries, for example, absence entry (see also chapter 5.08.2 Absence Entry), the functionality “Billable Time” and the entry “Estimate Grade of Completion”.

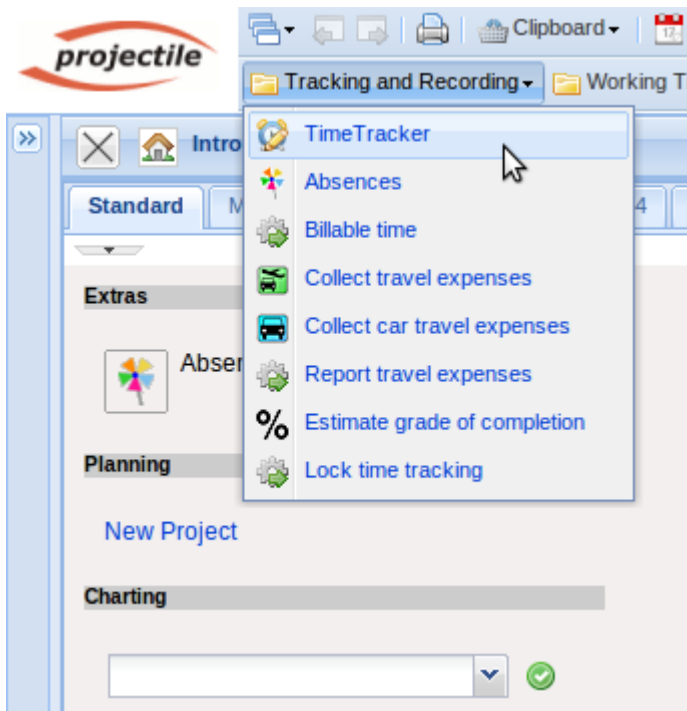
Overview of Rapid Entries:

- [Absences and Absences Employee](#)
- [Billable Time](#)
- Normalized Time (no standard functionality)
- [Travel Expenses and Travel Expenses Employee](#)
- [Driving Expenses and Driving Expenses Employee](#)
- [Travel and Accommodation Expense Account](#)
- [Estimate Grade of Completion](#)
- [Lock Time Tracking](#)

The rapid entries are stored in the left menu ...



... and in the top menu.



From: <https://infodesire.net/dokuwiki/> - **Projectile-Online-Handbuch**

Permanent link: https://infodesire.net/dokuwiki/doku.php?id=en:handbuch:kapitel_2:2.06_schnellerfassungen_und_weitere_funktionalitaeten

Last update: **2019/10/25 14:11**